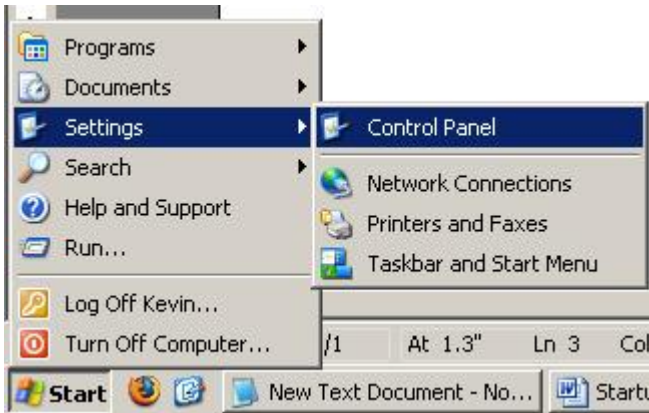
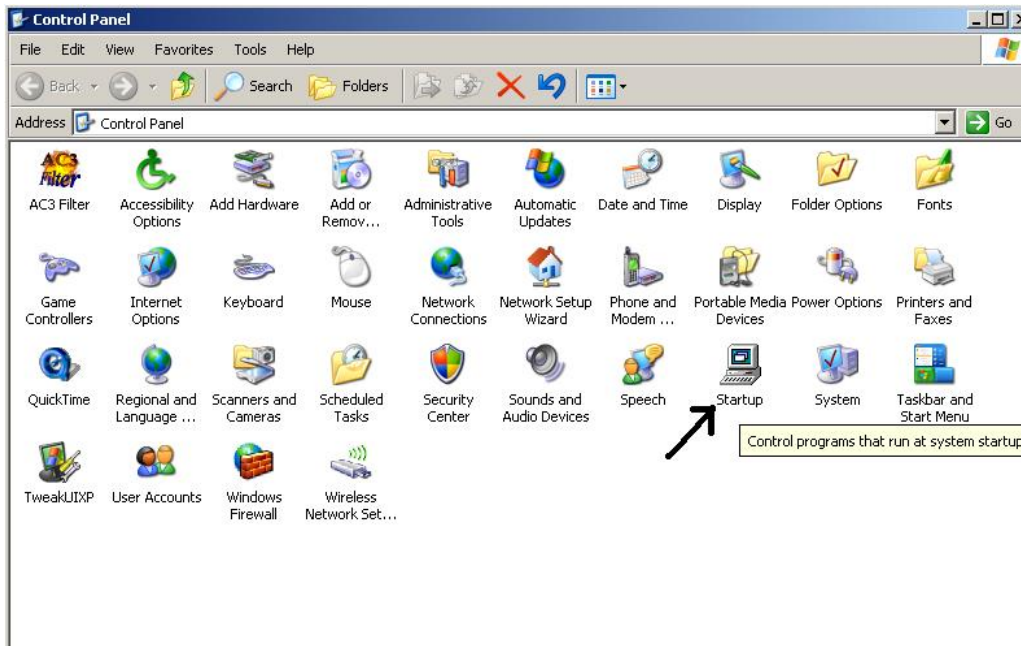


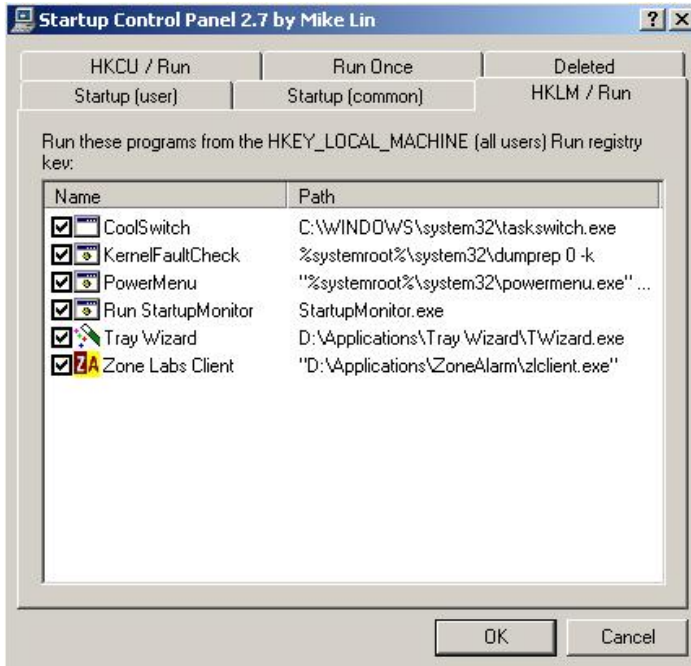
Once it is installed, Startup Control Panel is very easy to use.
First, go to the Control Panel (Start > Settings > Control Panel)



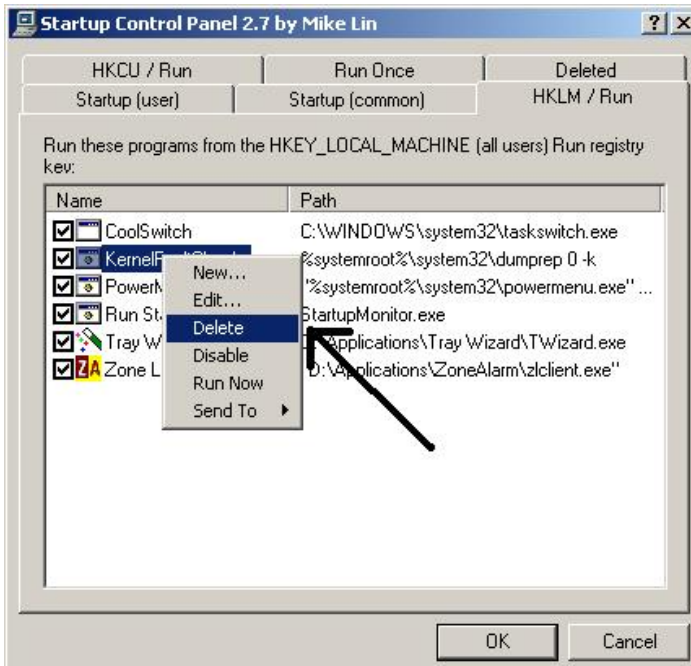
Then Double-click on the “Startup” icon:



Take a moment to check out all the Tabs along the top of the program. Each Tab corresponds with a different location where startup programs can be located:



Now, down to the tough stuff. To remove programs like RealPlayer, right click on them and select Delete:



Some applications you don't want to delete. Things from your ISP (Internet Service Provider), your Antivirus and Internet Security Programs (AVG, Norton, ZoneAlarm, McAfee), any PDA (Palm Pilot, PocketPC, etc)

